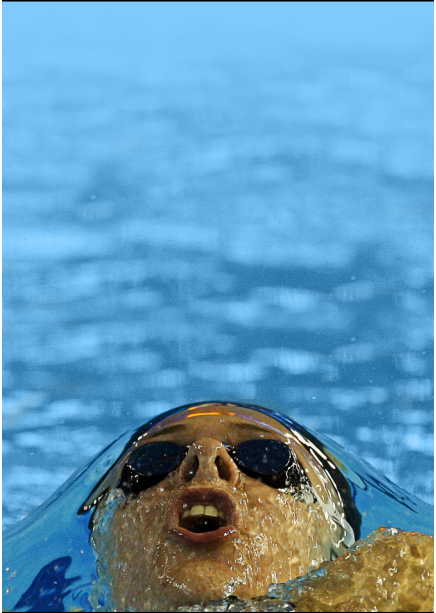




**Here.
There.
Everywhere.**



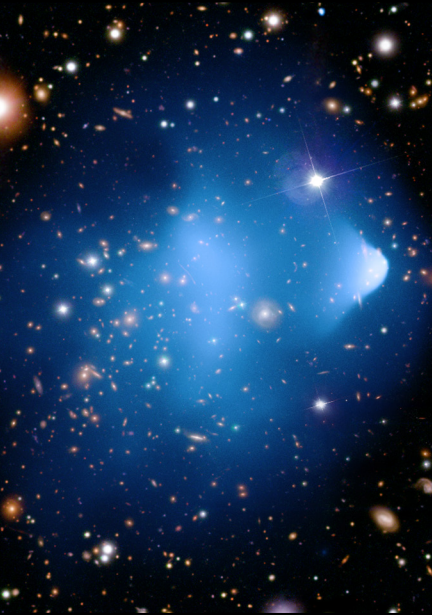
QUESTION:

What shape can form
when something
moves faster than the
environment it is in?

www.nasa.gov



**Here.
There.
Everywhere.**



**ANSWER:
BOW WAVES**

Such cone-shaped waves are familiar sights in front of boats on Earth, but they can also be formed when objects move rapidly through air or even the space between the stars.



<http://hte.si.edu/waves>